

# ZAYARD *trio*

Developed by  
**PALMIER**  
Developments 



# Inspiring Community





Founded in 2016, Palmier is a well-known real estate company that offers distinctive and superior residences in various regions of Egypt. Since then, the company has grown significantly.

We take great pride in the luxurious living standards and fantastic atmosphere we offer in all of our houses.

Palmier Developments provides real estate communities with distinctively clever layout, eco-friendliness, and privacy in New Zayed and 6th of October city.



# Vision

Is to become a leading and influential role in the sector of Real Estate Investment and Projects development by acquiring the most potential talents that can help us in developing our iconic projects.



# Misson

Is to respond to the market's demands by launching a set of projects that meet our customer's needs and live up to their expectations and level of satisfaction.

# Our Projects

We not only develop projects, we innovate how we can provide what our customer's need through extensive market research.

Our projects demonstrate our dedication to the field and how close we are to achieving our goal.

Our mission is not easy, but with the right amount of dedication, team work and integrity, we will be one step ahead and eventually lead the market..



**ZAYARD**  
— A V E N U E —  
New Zayed



**ZAYARD**  
Sheikh Zayed



**ZAYARD**  
RESIDENCE  
New Zayed

*Farida*  
Towers

**ZAYARD** *Elite*

# Location

New zayed

5 min alexandria road

5 min from mall of arabia

7 min from cairo university

2 min from sheikh zayed

8 min from Nile university





# Concept

A luxury compound refers to a high-end residential complex or estate that offers exclusive amenities, security features, and a luxurious lifestyle. It is designed to provide a sense of privacy, comfort, and opulence to its residents. The concept of a luxury compound typically involves a gated community or a private enclave that includes multiple residences or villas, along with shared amenities and services.

# Inspiring Community



# Sustainable

**Sustainability and Eco-Friendliness:** With growing environmental concerns, Zayard Trio incorporate sustainable features and eco-friendly practices. This includes renewable energy sources, water conservation systems, and eco-conscious landscaping.

# Lifestyle

Trio offers a wide range of amenities and facilities to enhance the residents' lifestyle. These may include swimming pools, fitness centers, sports courts, landscaped gardens, private parks, and entertainment areas. Also have dedicated amenities like private theaters.

# Infrastructure

The residences within a luxury compound are typically spacious and built with high-quality materials and finishes. They often feature modern architecture and design, with attention to detail and luxurious elements such as high-end appliances, smart home technology, and premium fixtures.

# Features:

electric car charging



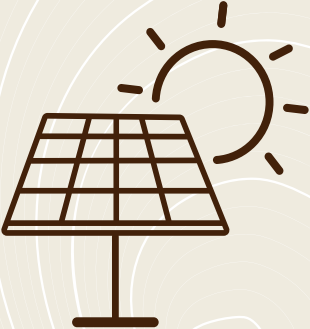
cycle track



open cinema



solar panel

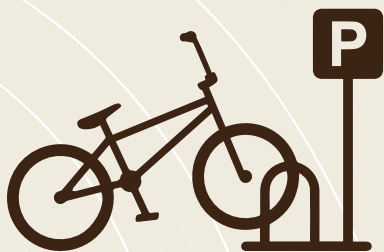


reading area



# Features:

bike parking



open gym



sitting area



padel tennis

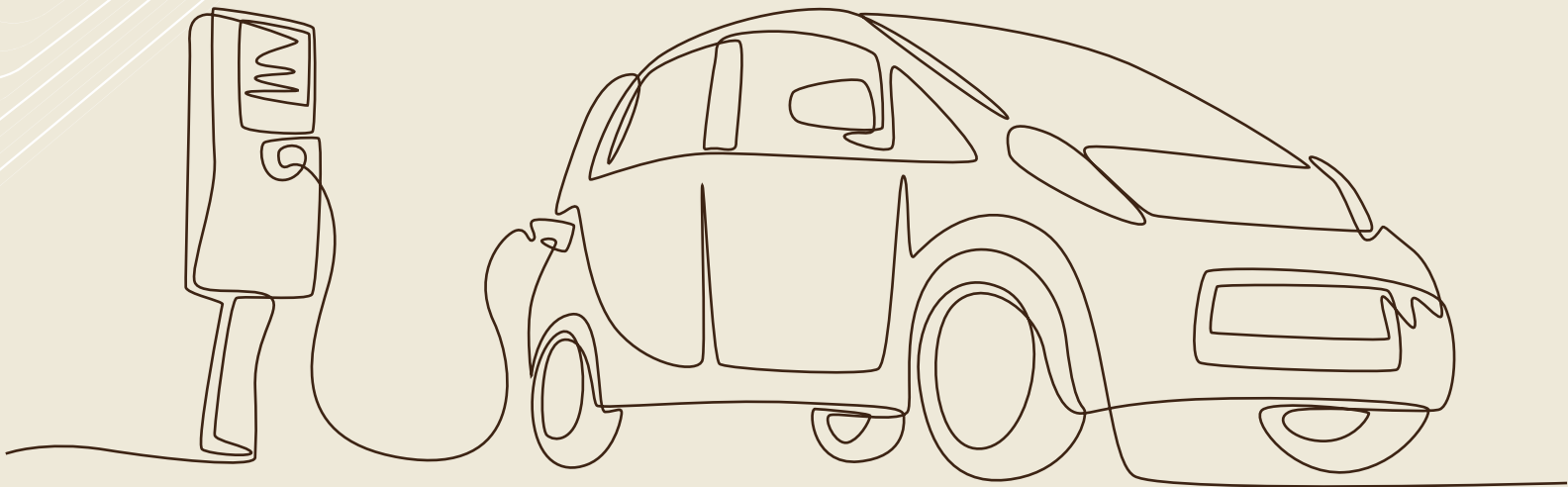


kids area



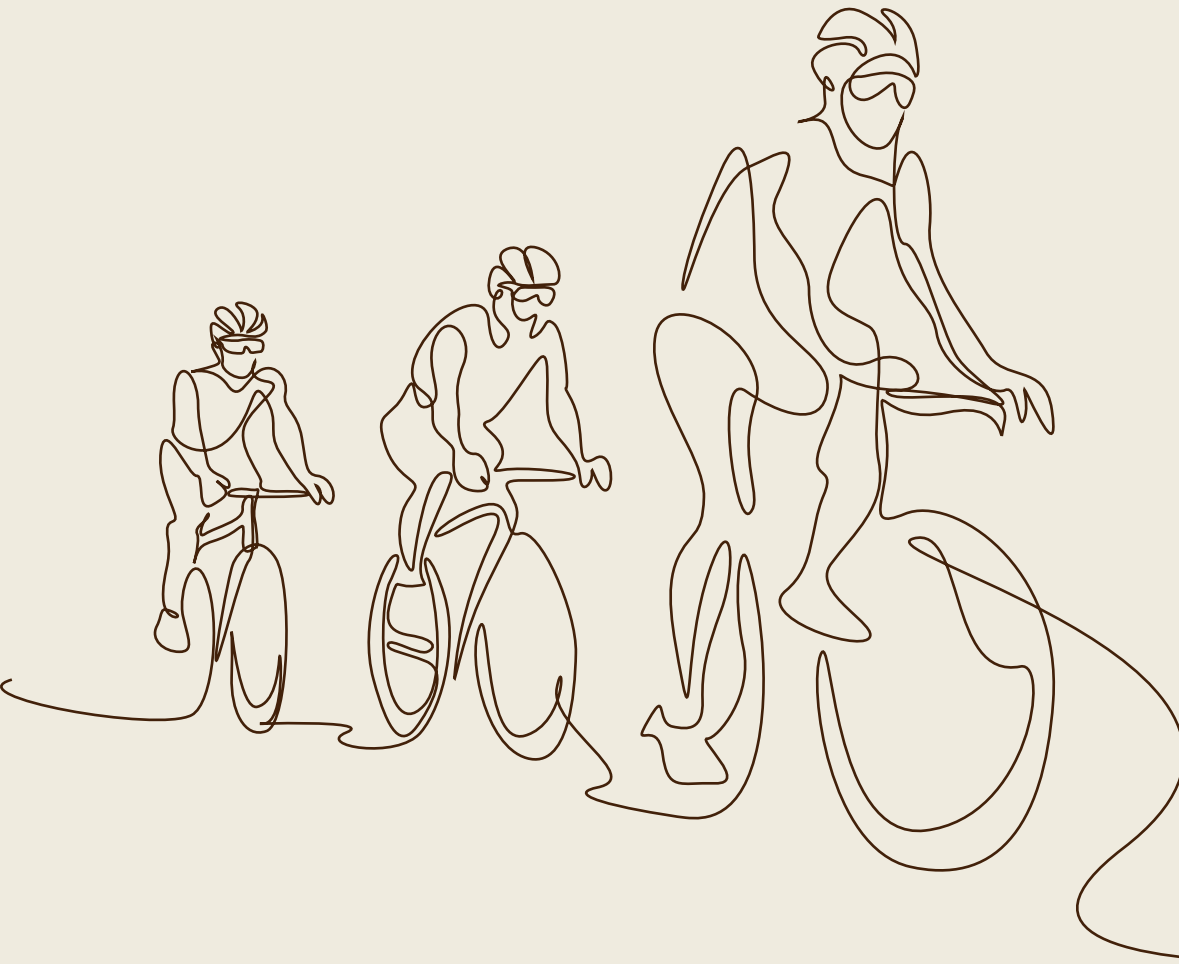
# Electric Car Charging

Charging an electric car involves supplying electrical energy to the vehicle's battery, allowing it to store and use that energy for propulsion.



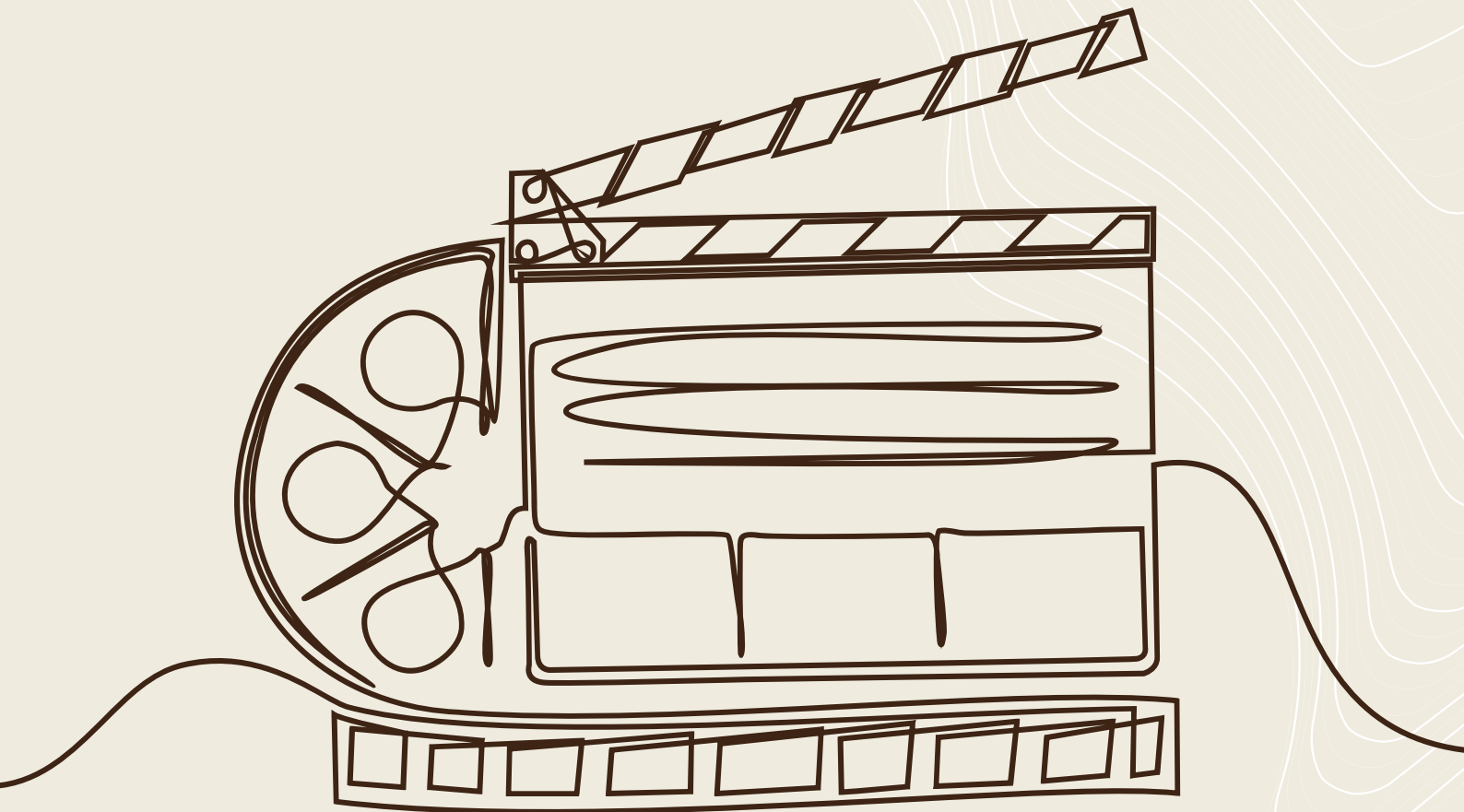
# Cycle Track

A cycle track typically refers to a dedicated path or lane designed specifically for bicycles, providing a safer and more comfortable route for cyclists.



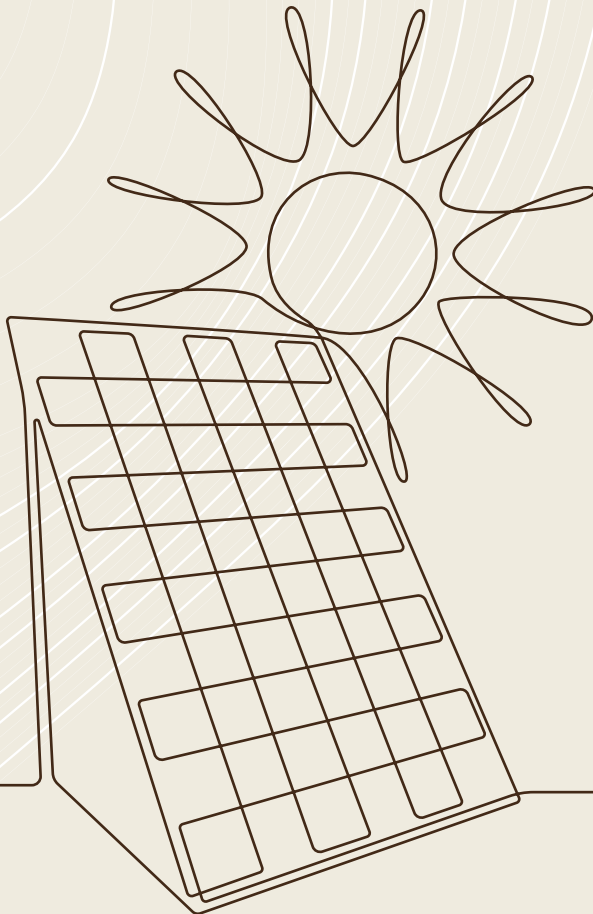
# Open Cinema

Open-air cinemas may showcase a variety of films, including classic movies, recent releases, or thematic film festivals.



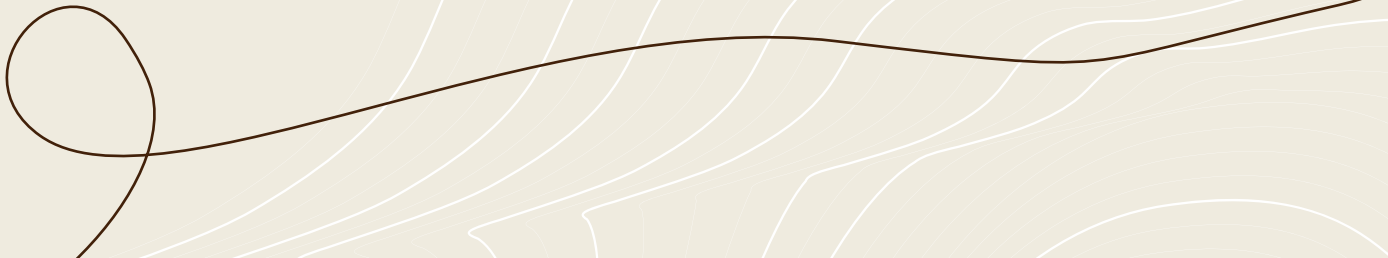
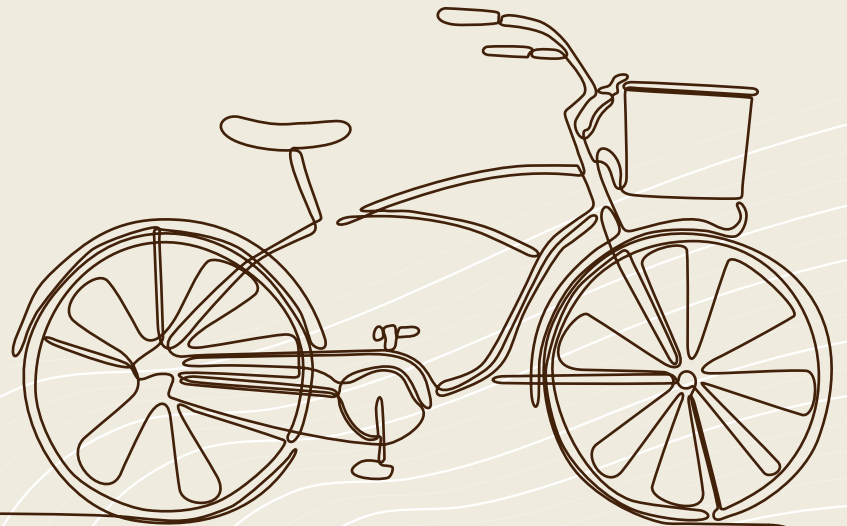
# Solar Panel

Solar panels are a key component of solar photovoltaic systems, which are increasingly used to generate clean and sustainable energy.



# Bike Parking

Designated areas or facilities where people can securely and conveniently park their bicycles.



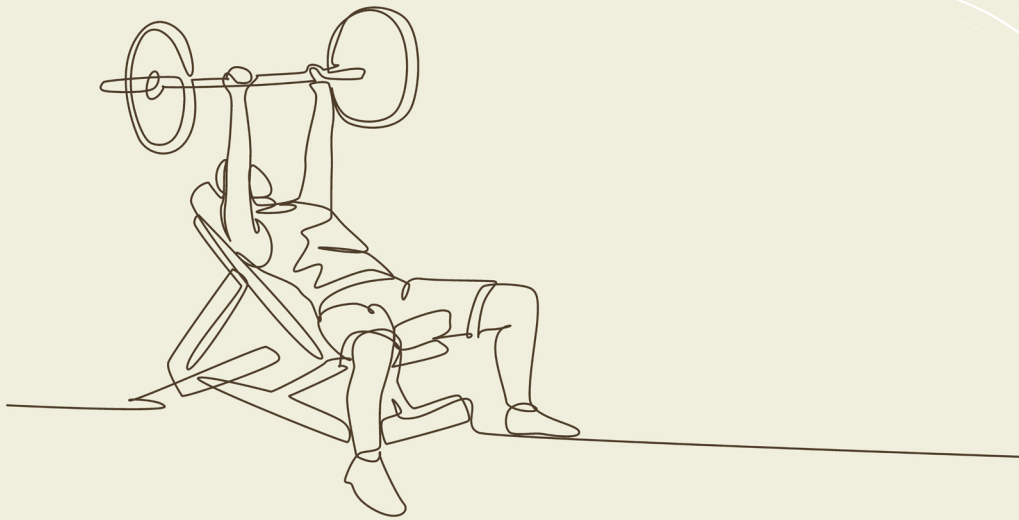
# Reading Area

A reading area should provide a relatively quiet and calm atmosphere, minimizing distractions to facilitate focus and concentration.



# Open Gym

Enjoy the many advantages of an outdoor workout at Zayard trio by eschewing the stuffy, dimly lit gym and switching to a bright, open space outside.



# Sitting Area

You can always find a shaded area to sit in, regardless of how hot it gets.



# Padel Tennis

Padel encourages social interaction, making it an excellent choice for those looking to engage with friends and meet new people while staying active.



# Kids Area

You can always find a shaded area to sit in, regardless of how hot it gets.



## Ground Floor 160m<sup>2</sup>

Lobby 01	2.70 x 2.40 m
Lobby 02	2.50 x 1.10 m
Maidroom	2.90 x 2.50 m
Kitchen	4.65 x 4.10 m
G.Toilet	2.30 x 1.40 m
Stairs	5.75 x 3.20 m
Dinning	4.20 x 3.75 m
Reception	7.40 x 3.70 m
Living	3.75 x 3.20 m

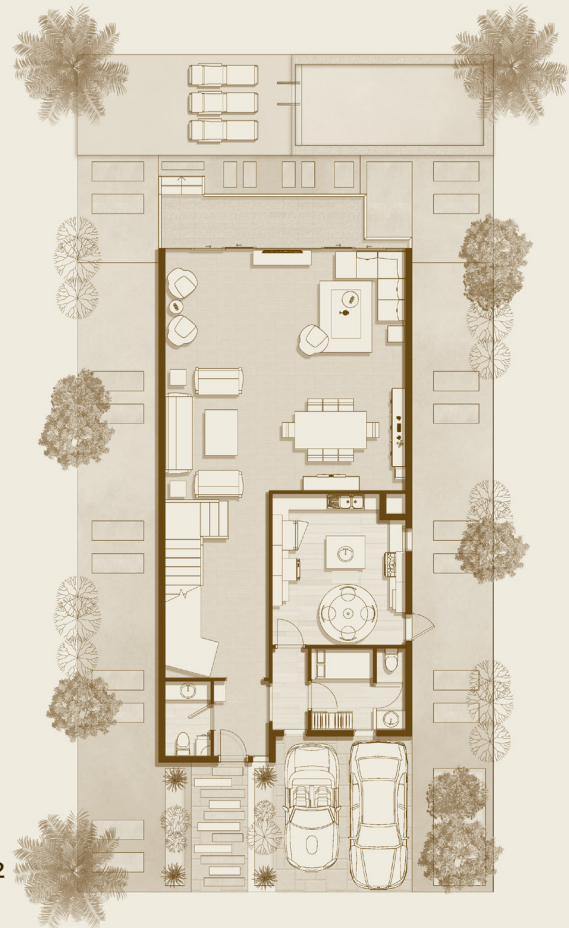
## First Floor 177 m<sup>2</sup>

Stairs&lobby	5.88 x 3.20 m
Living	6.52 x 3.60 m
Terrace01	3.70 x 1.30 m
M.Bedroom	4.00 x 3.70 m
M.Dressing	3.30 x 1.75 m
M.Toilet	3.30 x 1.85 m
Bathroom	4.10 x 2.30 m
Bedroom 01	4.10 x 3.80 m
Terrace 02	2.00 x 3.70 m
Bedroom 02	3.80 x 3.60 m

## Roof Floor 40m<sup>2</sup>      Roof Open Area 92m<sup>2</sup>

Stairs	5.15 x 1.12 m
Lobby	2.60 x 1.20 m
M.Bedroom	3.70 x 2.90 m
M.Dressing	1.70 x 1.70 m
M. Toilet	1.90 x 1.70 m

## Ground Floor 160m<sup>2</sup>



**Stand Alone (A) 377m<sup>2</sup>**

First Floor 177 m<sup>2</sup>



Roof Floor 40m<sup>2</sup> - Open Area 92m<sup>2</sup>



Stand Alone (A) 377m<sup>2</sup>

**Ground Floor 140m<sup>2</sup>**



**Ground Floor 140m<sup>2</sup>**

Lobby 01	2.45 x 1.70 m
Lobby 02	2.50 x 1.10 m
Maidroom	2.90 x 2.50 m
Kitchen	4.10 x 4.00 m
G.Toilet	2.45 x 1.40 m
Stairs	5.30 x 3.20 m
Dinning	4.20 x 3.35 m
Reception	5.85 x 3.20 m
Living	4.20 x 2.85 m

**First Floor 155 m<sup>2</sup>**

Stairs&lobby	5.70 x 3.60 m
Living	4.15 x 3.60 m
Terrace01	3.70 x 1.45 m
M.Bedroom	3.80 x 3.70 m
M.Dressing	2.10 x 1.90 m
M.Toilet	2.10 x 1.70 m
Bathroom	3.70 x 1.80 m
Bedroom 01	3.70 x 3.70 m
Terrace 02	3.85 x 1.85 m
Bedroom 02	4.15 x 3.60 m

**Roof Floor 35m<sup>2</sup>**

**Roof Open Area 79m<sup>2</sup>**

Stairs	4.75 x 1.12 m
Lobby	2.75 x 1.10 m
Bedroom	4.15 x 3.55 m

**Stand Alone (B ) 330m<sup>2</sup>**

First Floor 155 m<sup>2</sup>



Roof Floor 35m<sup>2</sup> - Open Area 79m<sup>2</sup>



Stand Alone (B ) 330m<sup>2</sup>

**Ground Floor 127m<sup>2</sup>**



**Ground Floor 127m<sup>2</sup>**

Lobby 01	2.45 x 1.80 m
Lobby 02	2.50 x 1.10 m
Maidroom	2.80 x 2.50 m
Kitchen	4.00 x 3.80 m
G.Toilet	2.45 x 1.40 m
Stairs	5.30 x 3.30 m
Dinning	4.10 x 2.70 m
Reception	4.55 x 3.30 m
Living	4.10x 2.40 m

**First Floor 140m<sup>2</sup>**

Stairs&Kitchenette	5.90 x 3.60 m
Living	3.60 x 3.60 m
Terrace01	3.70 x 1.20 m
M.Bedroom	3.70 x 3.60 m
M.Dressing	1.70 x 1.40 m
M.Toilet	2.20 x 1.70 m
Bathroom	3.70 x 1.70 m
Bedroom 01	3.70 x 3.60 m
Terrace 02	3.55 x 1.20 m
Bedroom 02	3.60 x 3.60 m

**Roof Floor 33m<sup>2</sup>**

**Roof Open Area 75m<sup>2</sup>**

Stairs	4.75 x 1.12 m
Lobby	3.80 x 1.12 m
Living	3.40 x 3.30 m

**Stand Alone ( C ) 300m<sup>2</sup>**

First Floor 140m<sup>2</sup>



Roof Floor 33m<sup>2</sup> - Open Area 75m<sup>2</sup>



Stand Alone ( C ) 300m<sup>2</sup>

    palmierdevelopments  
[www.palmierdevelopments.com](http://www.palmierdevelopments.com)

Guezira Plaza, Tower 1 - 2nd floor - 203 - Sheikh Zayed  
16831