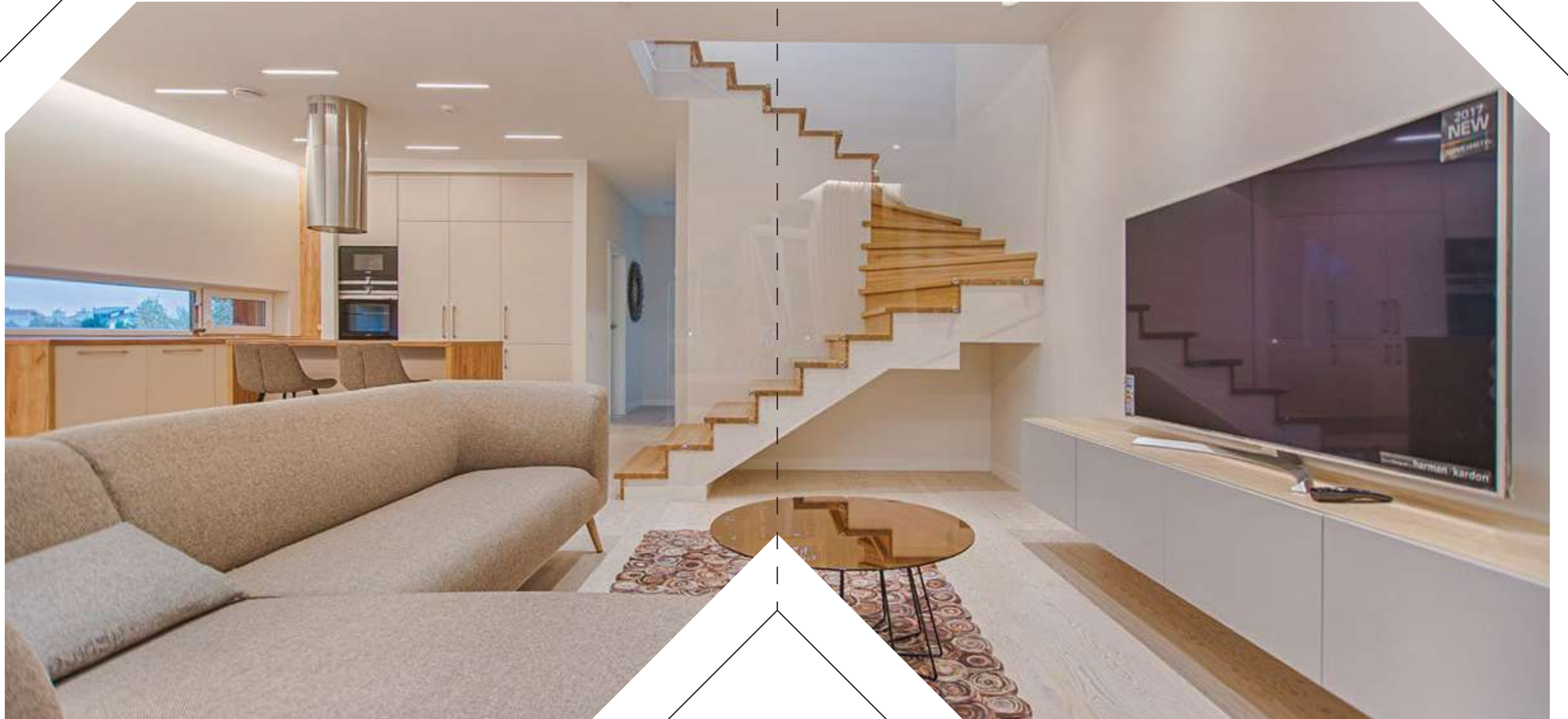


Developed by Palmier



16831

Head office : 18 Mosaddak st Dokki,Giza
Sales office : capital Business park, Shiekh zayed
www.palmier-realestate.com



ABOUT PALMIER

Since its starting in the Egyptian market, Palmier work according to a great vision aiming to have a leading role in the industry of the Real Estate.

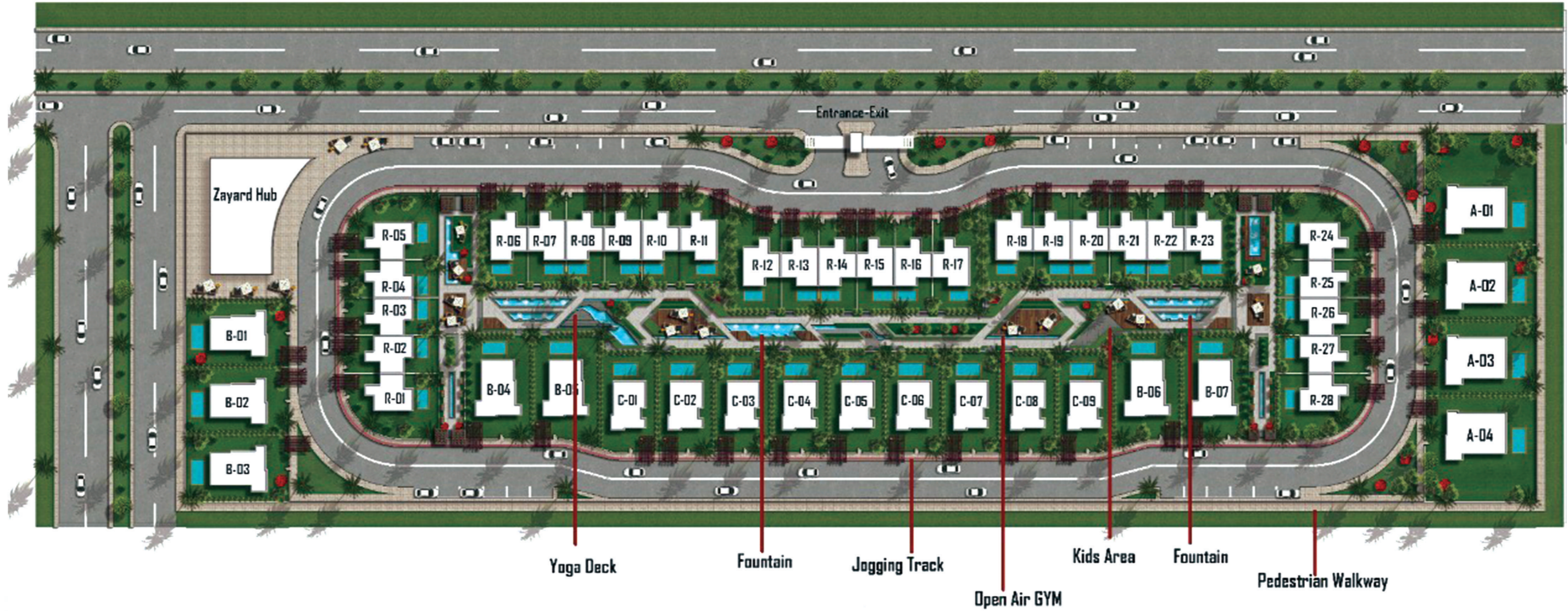
Over the last years, we worked very hard to built a solid portfolio containing a set of reputable projects that had been launched in order to meet customers' needs and looking for their satisfaction.



ULTIMATE ACCESSABILITY

Move to a very prime location, and one of the most promising destination for either living or investment in Sheikh Zayed.





LAYOUT

Ultra modern designs integrate with a huge space of greenery that exceeds 85% of the compound area to produce an iconic project where you can finally have your future home that you ever dreamed surrounded by the real meaning of greenery.

Only Stand Alone Villas & Row Houses

- Lake
- Open Gym
- Jungle Park
- Meditation Park

- Picnic Park
- Jugging Trail
- Shopping Mall
- Mosque





Ultra Modern House in GREENERY

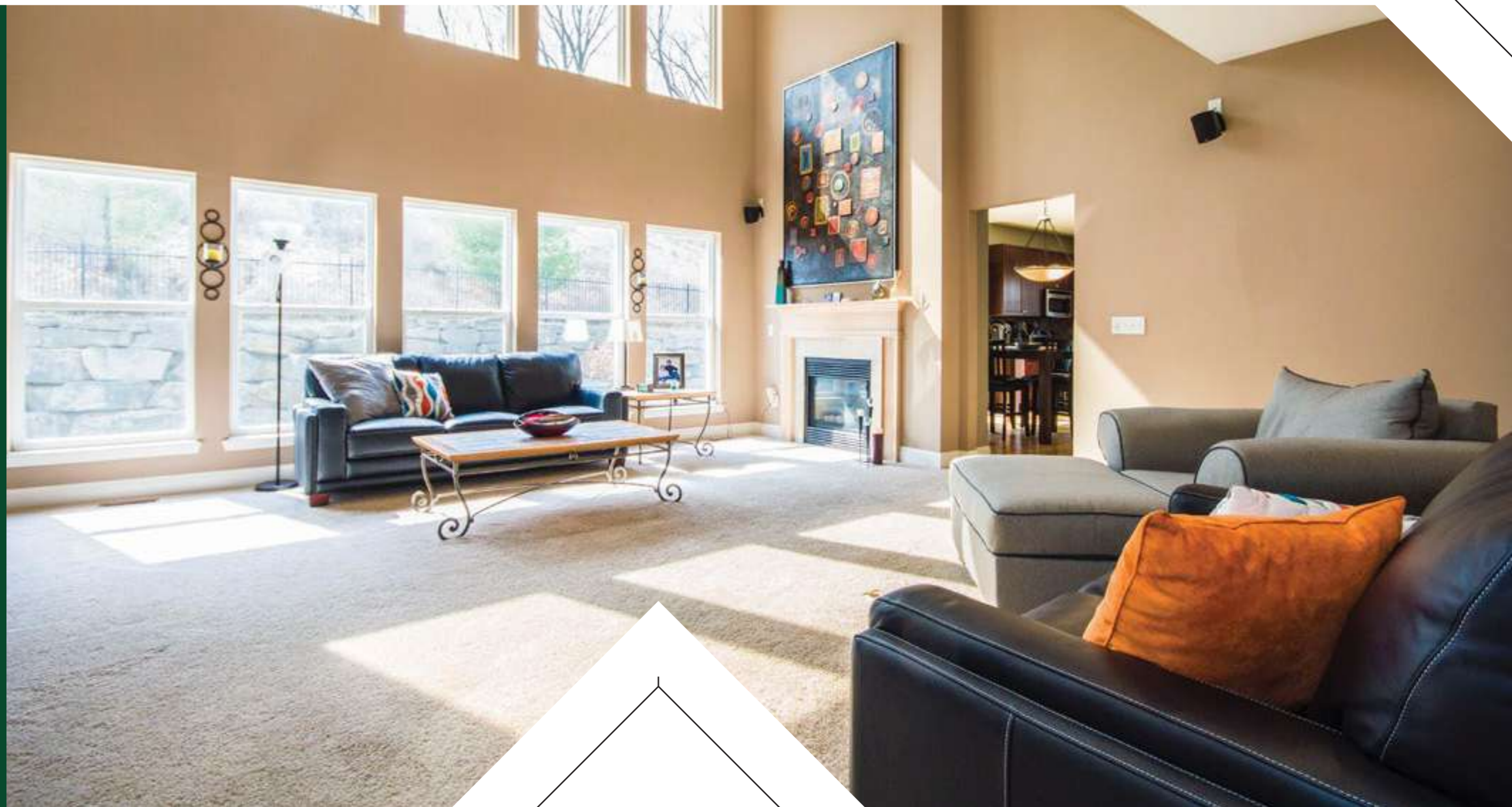
Live such a fancy life in your house with an amazing ultra modern design which created by a group of talented architects who chose to build it in a paradise of greenery.



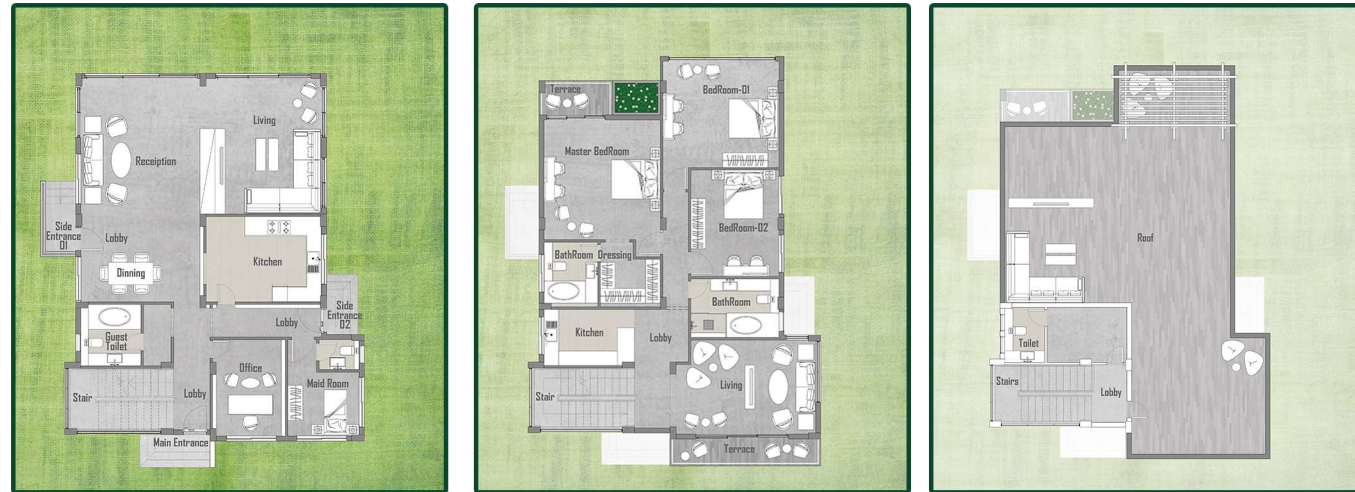
UNITS TYPES



STAND-ALONE
VILLAS



STAND-ALONE VILLA (A)
 815 m² As BUA: 515 m²
 Garden : 300 m²



Living	(5.40 * 4.80) m2	Master Room	(4.90 * 4.75) m ²	Terrace	(4.75 * 4.35) m2
Nany Room	(3.85 * 2.85) m2	Master Terrace	(3.10 * 1.40) m ²	Toilet	(2.35 * 1.70) m2
Toilet	(4.75 * 2.05) m2	Master Toilet	(2.65 * 2.20) m ²		
Dining	(4.75 * 2.05) m2	Dressing	(2.25 * 2.45) m ²		
Rec	(5.40 * 4.75) m2	Room 1	(4.75 * 4.35) m ²		
Toilet	(2.75 * 2.75) m2	Living	(5.70 * 3.85) m ²		
Kitchen	(4.55 * 3.40) m2	Kitchen	(3.70 * 2.30) m ²		
Office	(3.85 * 2.75) m2	Room 2	(4.35 * 3.60) m ²		
		Terrace	(6.15 * 1.10) m ²		
		Toilet	(3.60 * 2.40) m ²		



STAND-ALONE VILLA (B)
700 m² As BUA : 425 m²
Garden : 275 m²



Living	(4.00 * 3.60) m ²	Master Room	(4.00 * 3.70) m ²	Room	(2.65 * 2.60) m ²
Nany Room	(2.50 * 1.95) m ²	Master Terrace	(4.20 * 1.20) m ²	Toilet	(2.35 * 1.60) m ²
Toilet	(2.45 * 1.40) m ²	Master Toilet	(3.15 * 1.60) m ²		
Dining	(4.80 * 3.90) m ²	Dressing	(3.15 * 1.15) m ²		
Rec	(4.40 * 3.70) m ²	Room 1	(4.70 * 3.60) m ²		
Guest Room	(3.60 * 3.60) m ²	Living	(5.20 * 3.60) m ²		
Kitchen	(3.15 * 3.05) m ²	Toilet	(3.05 * 2.50) m ²		
		Room 2	(4.80 * 3.60) m ²		
		Terrace	(5.40 * 1.20) m ²		



ROW HOUSE



ROW HOUSE

390 m² As BUA : 290 m²
Garden : 100 m²



Living (5.95 * 5.45) m2
Dining (3.80 * 3.65) m2
Kitchen (4.00 * 3.50) m2
Toilet (2.80 * 2.55) m2
Stair (4.95 * 2.70) m2
Lobby (1.25 * 1.20) m2

Room 1 (4.35 * 3.75) m2
Room 2 (4.10 * 3.80) m2
Terrace1 (3.65 * 1.15) m2
Toilet (3.15 * 2.20) m2
Master Room (4.00 * 3.85) m2
Master Terrace (3.55 * 1.20) m2
Dressing (2.75 * 1.75) m2
Master Toilet (2.75 * 1.95) m2
Stair (5.75 * 2.70) m2
Lobby (2.75 * 1.25) m2

Washing Room (3.85 * 2.70) m2
Stair (4.90 * 2.70) m2
Lobby (2.70 * 1.30) m2





OUR SERVICES



Running Track



Mini Market



jungle park



Mosque



Security



Pharmacy



Golf Cars



open gym

Enjoy a balanced life

Give your body what it deserve, recharge your energy and be encouraged by your neighbors who will join you at the open area gym and they will be by your side in the jogging trail that pass by the magician view combining the greenery with the lake.



Chill out your soul & mind

In the far quit space of greenery, we arrange a private appointment for you to meet your soul individually to chill out your soul and mind at the chill out park of ZAYARD.



taste the
PICNIC differently

We payed a high attention to each single detail of your life while we were designing ZAYARD, so we know how much you need such a gathering with your childs and family to smell fresh air and have a lot of fun together. You can live such special moments at the Picnic Park of ZAYARD.



Let them GROW differently

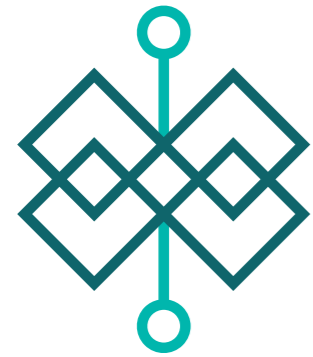
Because we care of their growth as you do, we deducted a large space inside the greenery to build for them "Kids jungle Park" for the first time in Egypt, in order to let their bodies and minds grow healthy in a different smart way.



Get anything you NEED in a blink of an Eye

We designed our elegant project to give you a unique experience of excellence and freedom in getting anything you need just in a blink of an eye through the professional Concierge Service.





ZAYARD
Sheikh Zayed

Beyond Greenery...

MOSQUE

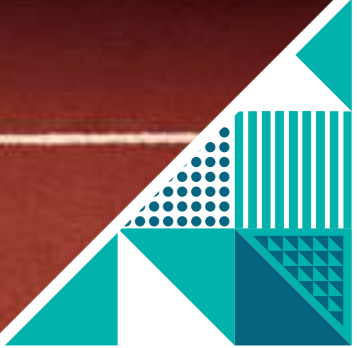




MINI
MARKET



RUNNING
TRACK





GOLF CAR
SERVICE



SECURITY





PHARMACY





Beyond Greenery...